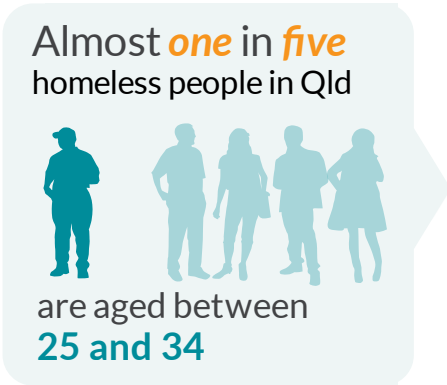


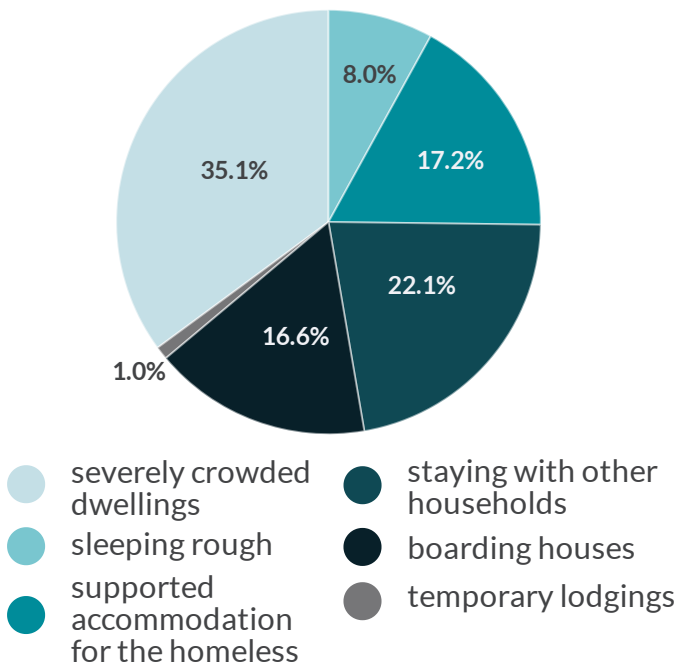


Homelessness in Queensland: Key facts

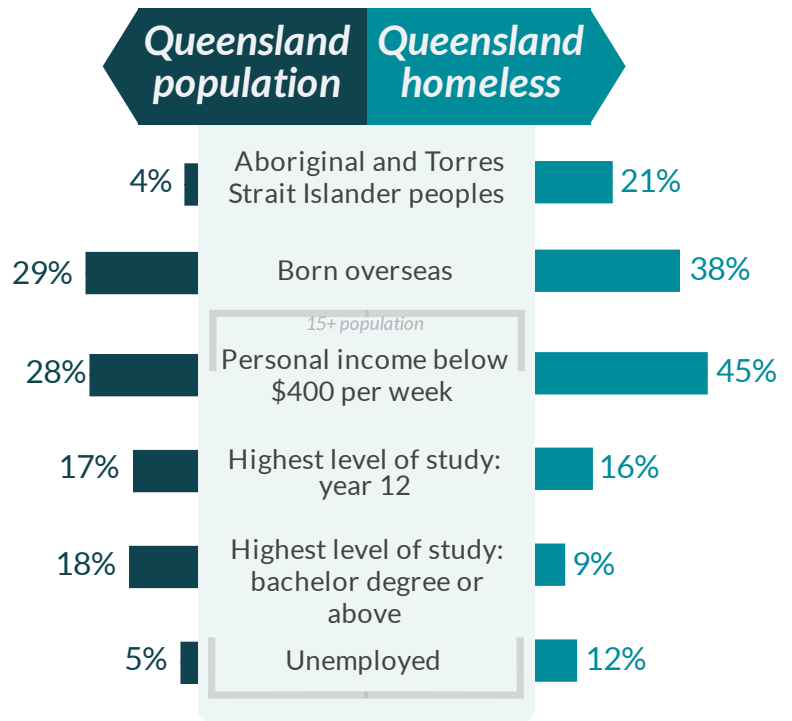
People experiencing homelessness can have a varied range of **complex** legal and other issues that, when not dealt with, can further exacerbate this experience.¹ Information on homelessness can therefore play a **vital role** in the planning of legal assistance services across Australia. People experiencing, or at risk of, homelessness are one of the **priority groups** under the **National Partnership Agreement on Legal Assistance Services**. The Foundation has recently updated the **2018 Collaborative Planning Resource** to include data from the Australian Bureau of Statistics "Estimating Homelessness" data release in March 2018 to assist with collaborative service planning. This infographic presents some **key facts** on homelessness.



Where do homeless people in Queensland live?



How do homeless people in Queensland compare to the rest of the population?



Source: ABS Census of Population and Housing: Estimating Homelessness, 2016 & ABS Census of Population and Housing 2016.

¹ Forell, S, McCarron, E & Schetzer, L 2005, *No home, no justice? The legal needs of homeless people in NSW*, Law and Justice Foundation of NSW, Sydney.

Sarah Randell & Emily Hinton, Law and Justice Foundation of NSW, November 2018,

| LGAs by greatest per cent of homeless people | | LGAs by greatest number of homeless people | |
|---|------------------|---|-------|
| Palm Island | 21.6% of the LGA | Brisbane | 5,813 |
| Yarrabah | 21.4% of the LGA | Gold Coast | 1,708 |
| Lockhart River | 16.5% of the LGA | Cairns | 1,357 |
| Aurukun | 15.4% of the LGA | Logan | 1,205 |
| Doomadgee | 13.4% of the LGA | Moreton Bay | 1,166 |